



Port Malabar Rifle & Pistol Club – 3-Gun

Some Close Some Far

Course Designer: Andy Zavalla

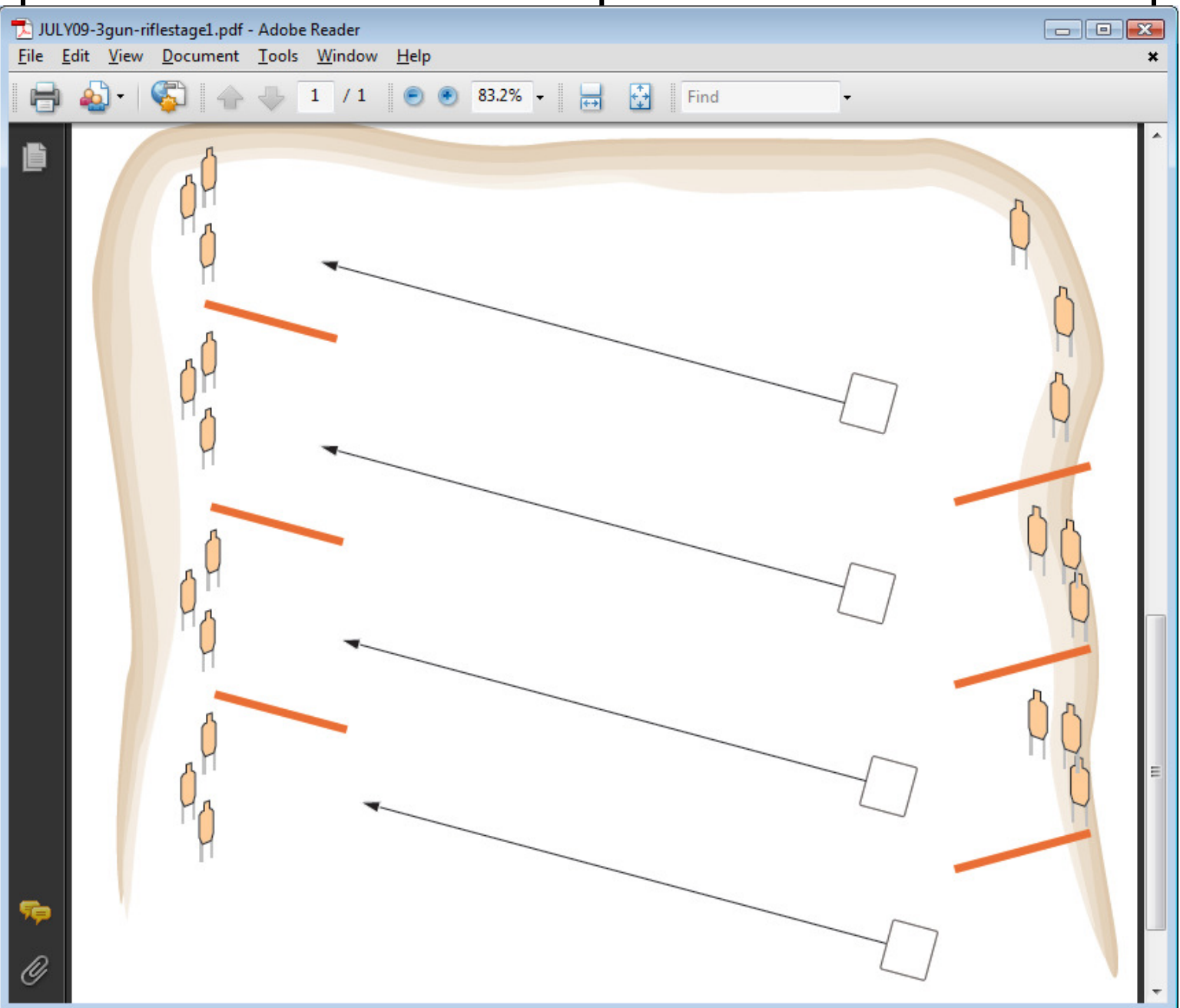
Stage Description: On start signal engage targets as you see them. The distant arrays must be engaged from the shooting position in front of them as shown by the arrows. The near targets can be engaged from anywhere they can safely be taken. Engaging targets from the wrong position is procedural per shot fired.

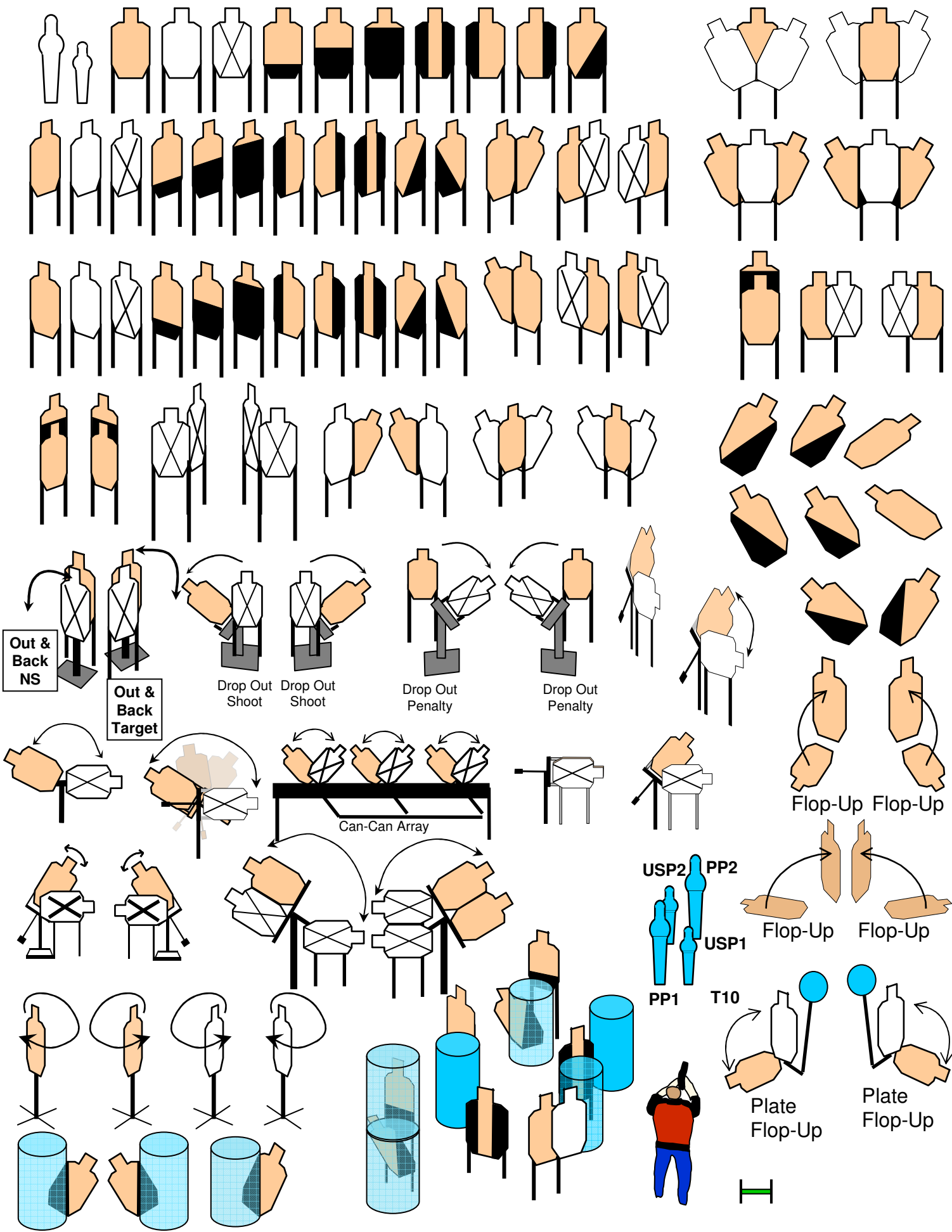
Notes: Be careful of 180 when moving and getting into shooting positions. Shooting position props can be used to steady shooters choice. Mini targets are scored same as usual. Delta does not count.

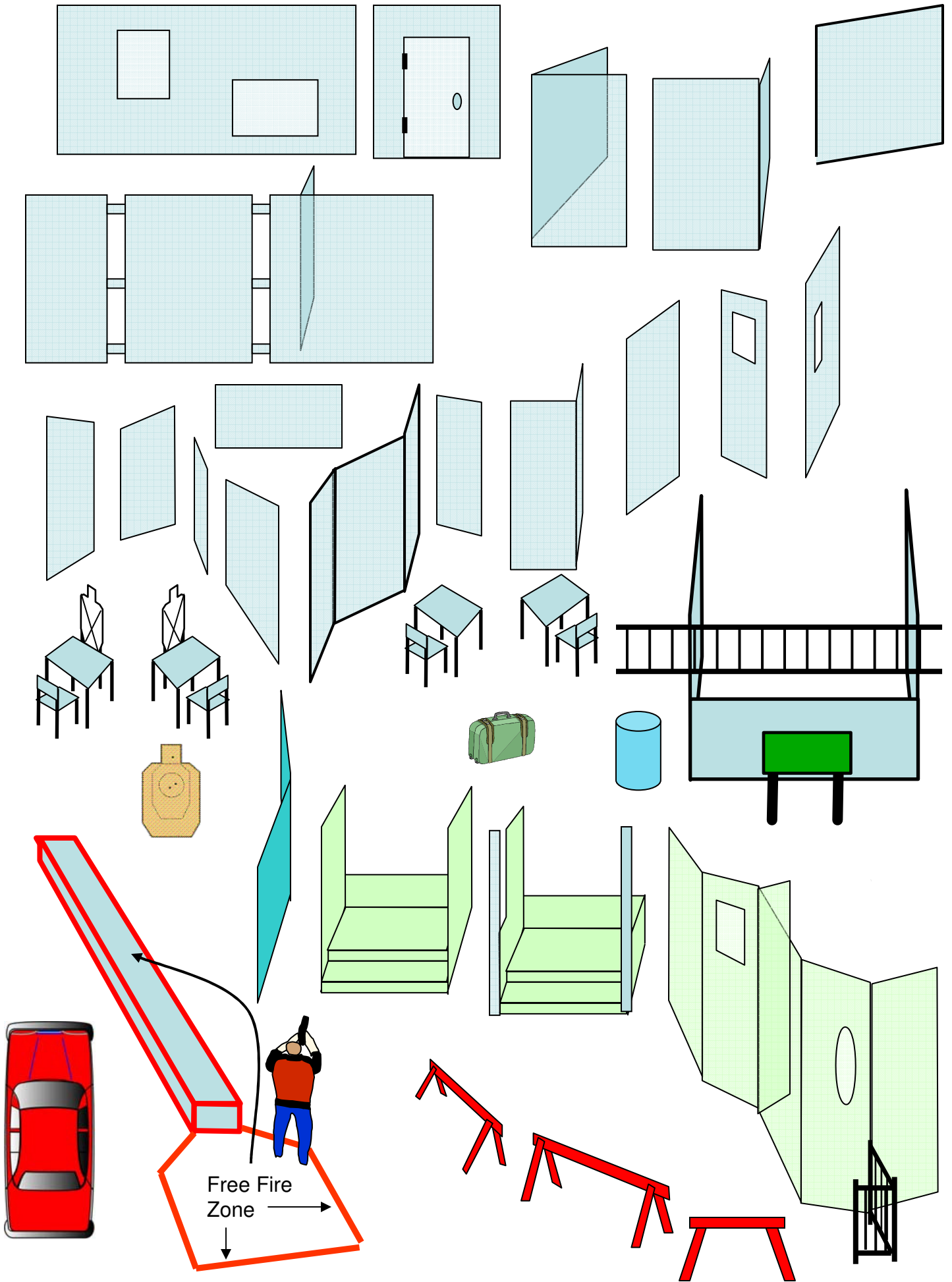
STRINGS: 1
SCORING: 42 rounds min, Comstock
TARGETS: 21 paper
SCORED HITS: Best 2 per paper
START-STOP: Audible - Last shot
RULES: Current IPSC Rulebook
Weapon: Rifle

Gun Ready Condition: Loaded Low Ready

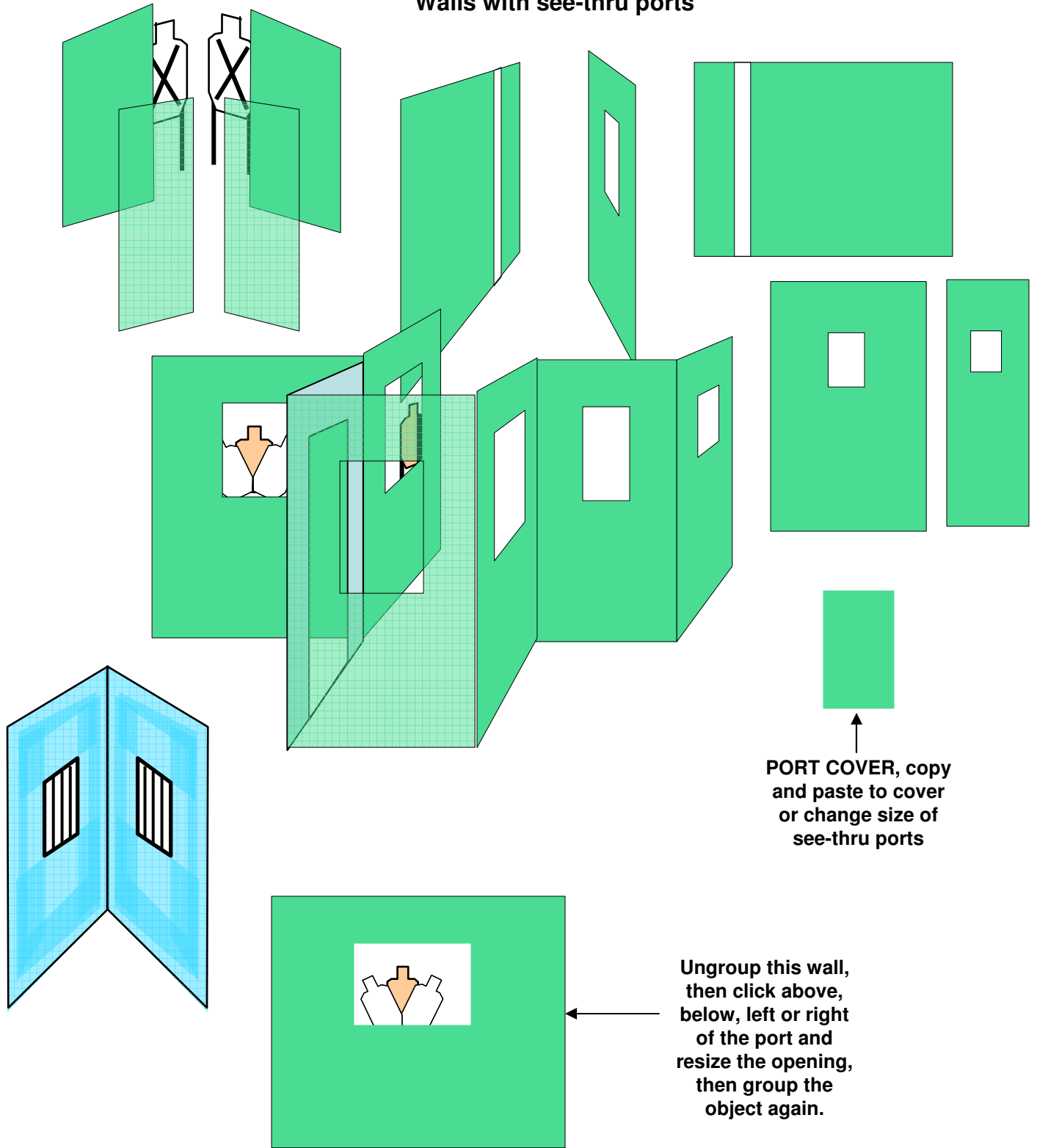
Starting Position: In Rear Box facing long distance array. Barrel pointed in safe direction



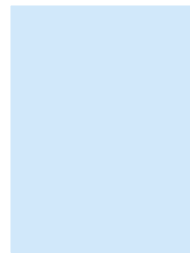
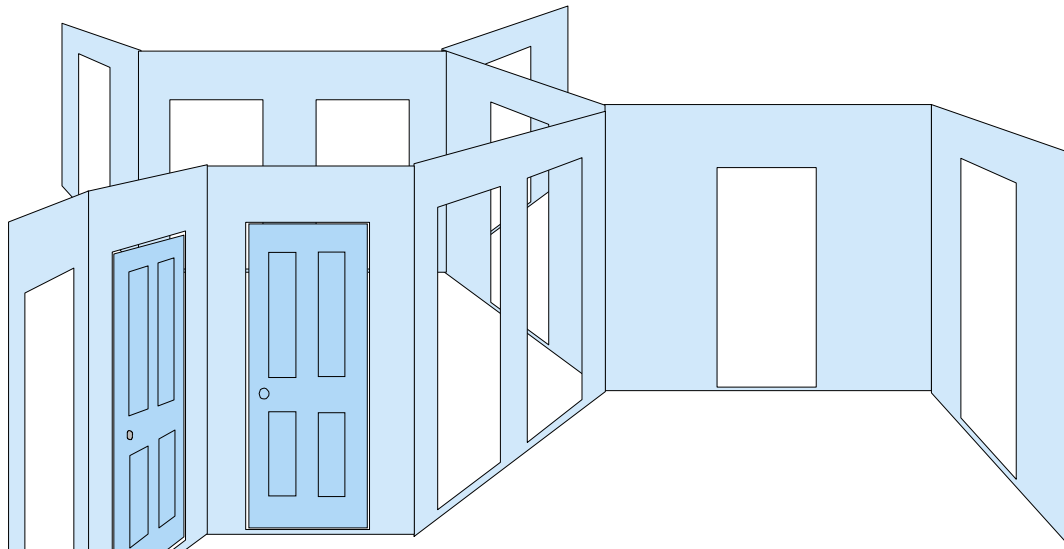




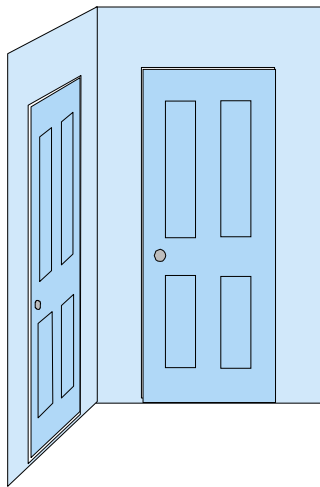
Walls with see-thru ports



Walls with see-thru doorways & removable doors



← Copy and paste, resize or edit points of this panel to cover or change a see thru doorway.



Doors- copy and paste these to make a door wall.

